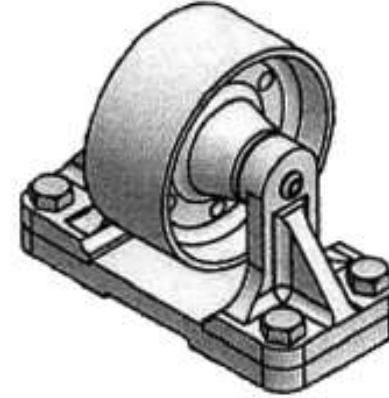
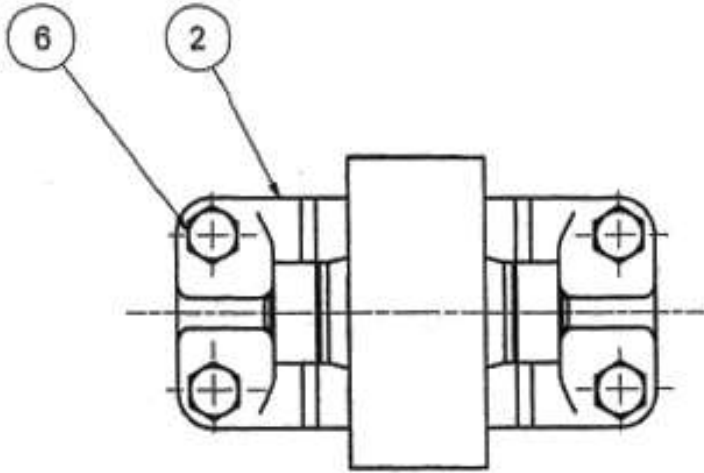
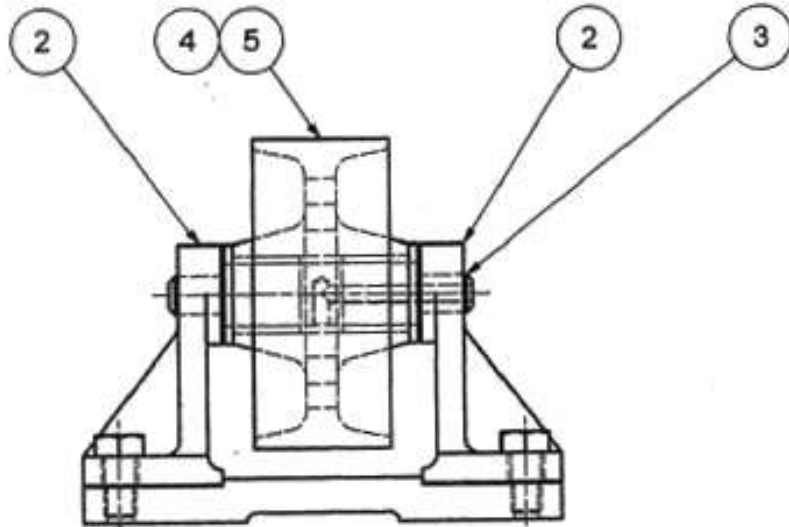


KASNAK GRUBU PROJESİ

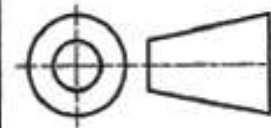


Buradaki çizimler İngiliz sistemine göre çizilmiştir. Bizde üst görünüşler alta, sol yan görünüşler sağ tarafa çizilmelidir. Ona göre gerekli düzeltmeleri yapınız. Montaj resminin ön görünüşü kesit halinde olsun. Çizim sizin projeniz olacaktır. İfadeleri Türkçeleştirin.



6	Hex Bolt	Steel, Mild	4	ANSI B18.2.3.5M - M10 x 1.5 x 20
5	ROLLER	Cast Steel	1	RA_01-3
4	BUSH	Bronze, Soft Tin	2	RA_01-5
3	SPINDLE	Alloy Steel	1	RA_01-4
2	BRACKET	Cast Iron	2	RA01-2
1	BASE	Cast Iron	1	RA_01-1
ITEM	DESCRIPTION	MATERIAL	QTY	PART NUMBER

MOUNT DRUITT COLLEGE OF TAFE
DETAIL DRAFTING



DRAWN P.S.

CHECKED

DATE 25:09:2009

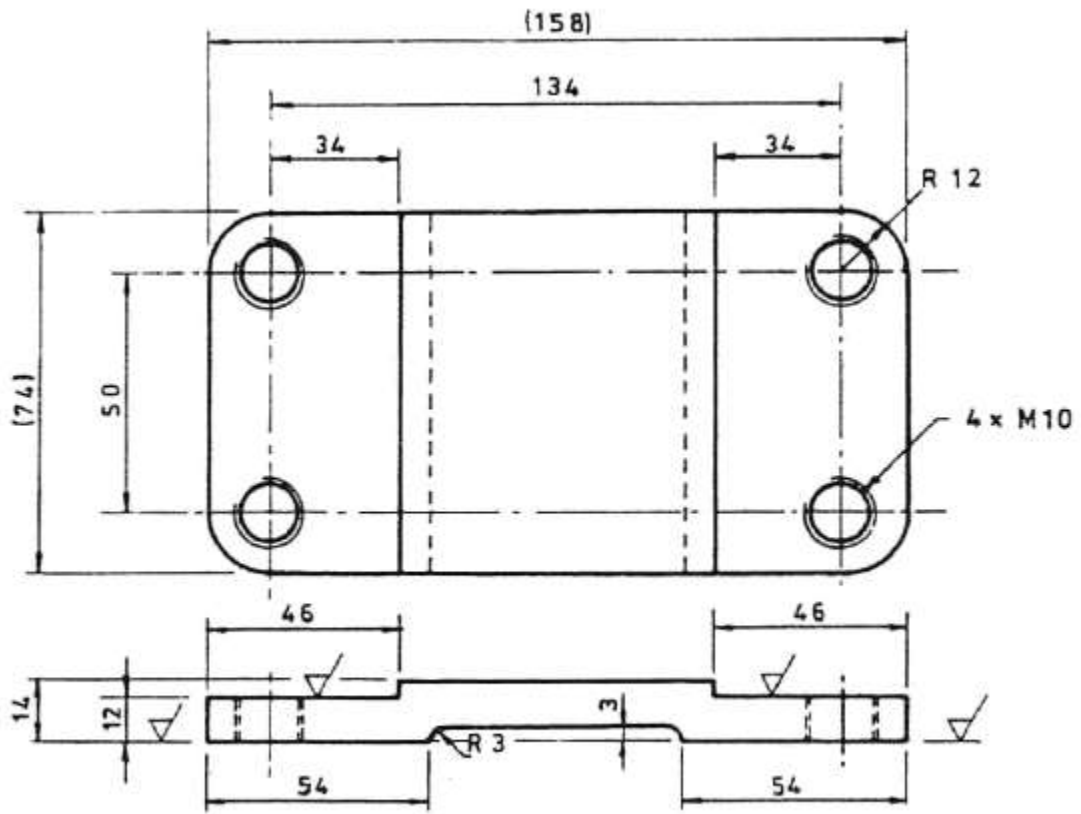
TITLE

ROLLER ASSEMBLY

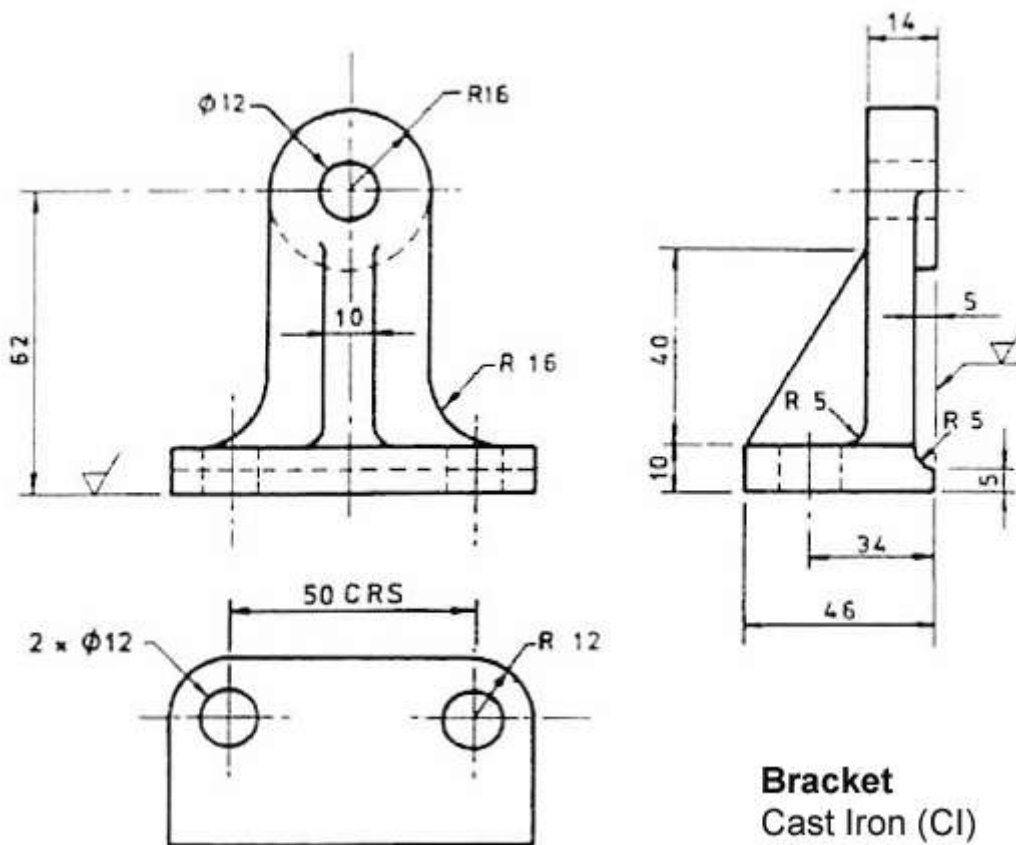
SCALE 1:2

DRG. NO. RA_01

Dikkat: Görünüşlerin yerlerini düzeltin. Gerekli yerlerde kesit alın. İngilizce ifadeleri Türkçeleştirin.



Base CI



Bracket
Cast Iron (CI)

